



Newsletter

Next Monthly Meeting — February 7, 2023 at 7 PM

held IN-PERSON at the

BURLINGTON LIBRARY

820 E. WASHINGTON AVE. , BURLINGTON

YOUTUBE

Check out our instructional videos on our YouTube Channel, including Tom Howorth's presentation on the metric system

BRING & BRAG

Click above to be taken directly to view projects from fellow members

COMMUNITY BULLETIN BOARD

Click above to see who's got what for sale!

Click the underlined title in the boxes above to be taken directly to that section of the newsletter.

A Message from the President...

I am excited to report that the Board of Directors meeting this month was held in-person at Bob's Burgers in Burlington. While the board has been meeting via Zoom for almost three years now, I felt strongly that it would be helpful for us to talk face to face in an effort to work on solving a number of issues that have popped up in the recent past. I am very pleased that 13 of the 16 Board Members attended with their sleeves rolled up ready to get to work. What an encouraging way to start the year!

I'm sure most of us are familiar with the colloquial term "the elephant in the room", most often used to describe a major problem or controversial issue that is obviously present but avoided as a subject for discussion because it is more comfortable to do so. As we started the new year we indeed had an elephant in the room in that we suddenly found ourselves without a Programs Committee. The Programs Committee is basically responsible for finding, selecting and obtaining our monthly speakers both

**Connect with
your fellow
members:**



[Instagram](#)



[Facebook](#)



[YouTube](#)



[Website](#)

for Zoom meetings as well as in-person meetings. They also set up field trips to various places of interest to travel to in place of a monthly meeting a couple of times a year.

Finding a few members that would be willing to be part of this committee is our highest priority right now. Our club is well known for the quality of our educational and informative presentations and this is most certainly the result of this committee. [I implore any club members that would like to do something useful for the club, to consider talking to myself or any other board member. It is a great way to learn the workings of the club and doesn't require any woodworking expertise.] (Hint hint - great spot for people new to woodworking!)

We are working on re-starting the raffles at our in-person meetings. February's prize is a Veritas high-quality Honing Guide for use with chisels and plane irons. If you are having trouble getting the exact edge you want on your chisels, this could solve your problems.

Tuesday, February 7th, at the Burlington Library...

The meeting format for this Tuesday will be a little different than we are used to. I want to use a good part of the meeting to introduce the 2023 Board of Directors to the membership and have a time of interaction between the membership and the board. This is your opportunity to voice concerns, give suggestions, and basically let us know how we can best serve you. (Yes, there will be time for bring and brag as well. We may even squeeze in a short program on choosing bandsaw blades!)

See you there,

— John Ellis, NCWA President

Mark Your Calendar!

**Tuesday, March 7th, at
The Mount Vernon Christian School**

Lutherie, an Unexpected Occupation:

Brian Griffin retired as an insurance broker 32 years ago and soon found himself in another business selling and writing about Orchard Mason Bees. After a dozen years in the bee business he retired again to relax and play his homemade ukulele. His retirement did not last. For the last dozen years he has found himself in another business, Lutherie, the making of stringed instruments, namely the ukulele. Griffin will tell of the unexpected growth of his new business, show us some of his instruments and discuss the methods and materials used in building a ukulele. He might even play us a tune.



PROGRAMS COMMITTEE NEEDS HELP!!!

I believe most of you reading this already know that our Programs Committee is in urgent need of some help. The committee chair resigned at the end of last year. As far as any of us can tell, there were no other committee members helping him so we are starting from scratch to re-form this vital committee. Until we do so, our Board of Directors "Members-at-Large" are acting as a temporary committee to try and keep our quality program presenters happening as well as planning one or more field trips in the near future. (My thanks to Chuck B. Peter G. Craig E. and Tony E.)

I am asking everyone in the club to seriously consider stepping up to join this committee. Keep in mind that this committee does not necessarily need expert woodworkers to make it successful. Rather it needs people that are ready to brainstorm ideas, do on-line research, pursue leads and do follow-up scheduling. (This is a great way for some of our newer members to become involved in the club.)

Another opportunity that might mesh with your interests is not a board position but we need a volunteer that is willing to conduct the ticket sales and drawing for raffle prizes at our in person meetings. He/she would also liaison with the Board to obtain raffle items, either by direct purchases (with board approval) or by contacting preferred vendors from time to time for possible donations of products for prizes.

Anyone interested in any further information on these positions, please contact John Ellis at (360)322-7923 or text to 425-426-4531 or email at - sunnydaydulcimers.com

Other COMMITTEE NEEDS will be discussed at the Tuesday Meeting.

If your 2023 New Years Resolutions included finding ways to do more volunteering for worthy causes, this is your Opportunity! Your club has several great opportunities to get involved with your fellow woodworkers in helping to shape the club activities for the coming year. Ask any fellow member about their experiences serving on one of the club's committees and you'll hear about the camaraderie with other woodworkers, the fun, the lessons learned, and the sense of accomplishment gained from their time on their committee.

Raffle Prize at the February 7th Meeting!

NCWA has done tool raffles at in-person meetings in the past, and your board of directors is considering resuming that feature of our monthly meetings.

Recently, past members Nancy and Paul Andersen donated two items to our club. At our meeting at the Burlington Library on February 7, tickets will go on sale at 6:30 pm, look for Peter Gantt, and continue during the break for this brand new Lee Valley Mk II Standard Honing guide, a \$77.50 value. Tickets are \$1 each or 6 for \$5. The drawing will be held after the break. **ANOTHER EXCELLENT REASON TO ATTEND IN PERSON, LIKE THE "GOOD OLD DAYS!"**



One of the things that distinguishes our club is the **EDUCATION PROGRAM**. Prior to covid, numerous in person classes were held. These depended on the generosity of our talented members to teach them. To restart this wonderful program I need your help. Please contact me at andf32plr@yahoo.com if

- (1) If you taught before and want to teach again.
- (2) If you have not taught but are willing to try or have thought about teaching.
- (3) You are not sure you want to teach but you want to help, we could use teaching assistants, host shops, and administrative/tech help too.
- (4) Also I welcome your ideas for classes to offer.

A wise woman once told me you can learn a lot by teaching. It's true! And it is a great way to get more out of the club too. Most of us are not professional woodworkers or teachers but we can share what we know in a fun setting.

Thank you.

- Andrew Pellar, Education Chair

and speaking of the Education Program!...

JANUARY BOX CLASS

Jerry Couchman finally conducted his first class in three years in January. It was a three day class with all five students completing their boxes. Pictured below from left to right are Marshall Eberhart, Aidan Hersh, Bill Keeler, Barry Tonkin, Clark Douglas and instructor Jerry. Aidan and Barry are new members of NCWA. Even with three full days, they still needed to complete final finish and lid installation. All five did excellent work. – Jerry Couchman



ANNUAL MEMBERSHIP DUES

ONE LAST CHANCE TO PAY YOUR 2023 DUES - \$35.00

Most members have paid their dues for 2023. There are a few that haven't, but there is still time. February 7th is the cutoff date for members to pay their dues and renew their membership. Any member that has not paid their dues will be dropped from membership.

If you are not sure if you have paid your 2023 dues, please contact the Club's treasurer at: ncwa@wavecable.com

Members may renew their membership and pay their dues on-line using PayPal or by mailing a check to the NCWA Treasurer.

1. To pay dues on-line with **PayPal**:
 - Log on the NCWA web page (<https://www.ncwawood.org/>) and click on the "Debit or Credit Card" PayPal button, enter your debit or credit card information (\$35.00 will automatically be charged to your card).
2. To pay dues with a personal check:
 - Mail a \$35.00 check (payable to: **NCWA**) to the Club's treasurer:
NCWA
c/o Al Ashley
26220 48th Ave NE
Arlington, WA 98223

Membership cards will be mailed to each renewing member upon receipt of 2023 dues.

Bring and Brag

Crèche – Christina Keenan

I approached my first commission – a crèche for 19 nativity figures – as theatrical set design. Weathered cedar planks provided a simple, rustic feel. “Stage” size was determined by the number and size of the figures. The two side walls and back wall are secured at the bottom with hand-cut metal dowels epoxied into the bottoms of the walls, with corresponding holes in the base. Three narrow strips of wood attached to the roof

at the back and sides corral the walls into a rigid form when the roof is slid into place. Side walls cut at an angle allow the roof to slope gently from back to front. Spray adhesive secured fake dirt to the “ground” outside and finely chopped bits of straw to the barn floor. Mini yellow lights

stapled to the underside of the roof provide a wash of warm light to the barn. Date palm trees frame the scene. Off season, the crèche stores flat.

George Knutson’s support and interest in the project extended to letting me rip boards, use the sled for cross cuts, make miter cuts, use the drill press and even the jointer. It was a great learning experience.

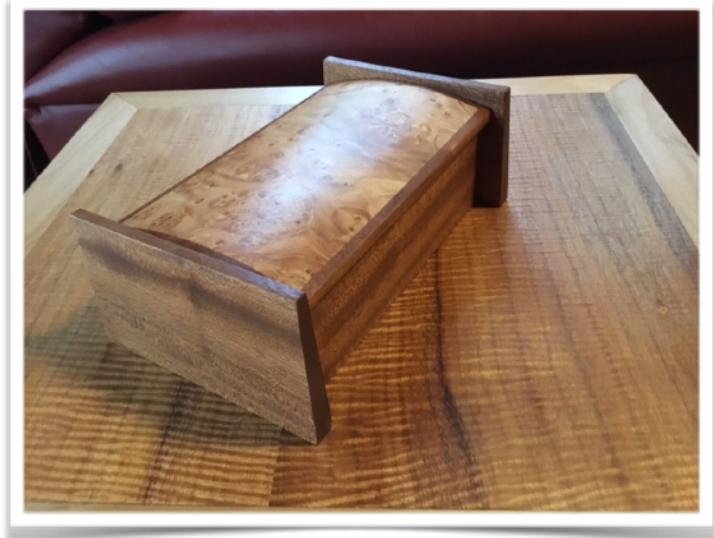


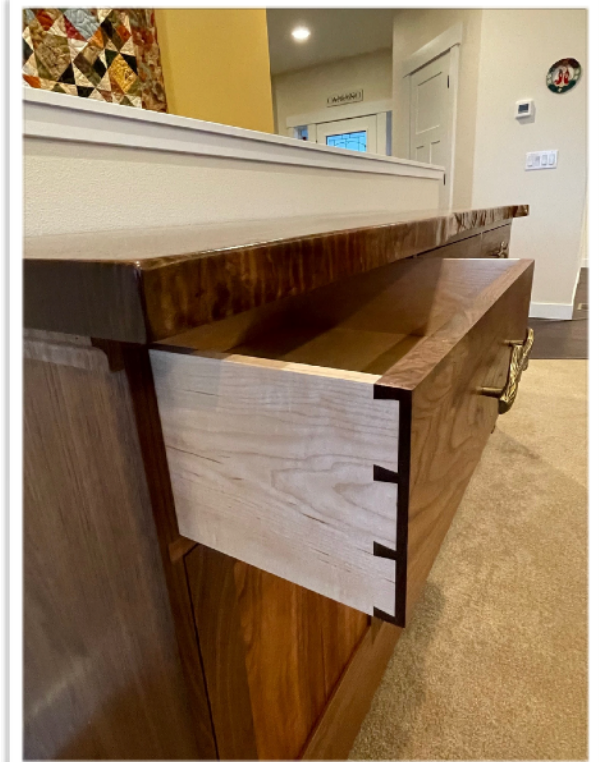
Floating Top End Table – *Jim Bucknell*

The floating top table is alder with a Koa figured veneer top. The legs are tapered with a pyramid top. It is finished with several coats of wipe on poly.

**Wooden Box** – *Jim Bucknell*

The curved lid box is sapele with maple veneer bottom and top laminated in a vacuum press. The corners are joined with small biscuits and it is finished with wipe-on poly.





Sideboard –Mark Kraus

I built the dining room sideboard to go with the walnut slab dining table that I built about a year ago. Both are original Craftsman style designs of my own. The sideboard's air dried natural edge walnut top slab has a nice figure (thanks to George and Greg for help with flattening it a while ago). The body is black walnut. Lots of dovetails were used throughout - through, half-blind and sliding - many of which are not easily seen in the photos due to the design and construction. The three drawer fronts are cut from a single board of walnut so that the grain pattern would be continuous across the three drawers. But that meant the hand cut half-blind dovetails had to be done carefully, as I could not redo a drawer front with another board if I had a disaster and still have that continuous grain pattern across the front. The internal drawer parts are hard maple. The lower section has four doors that have koa veneered panels. I book matched the veneer pieces to make the pattern shown and used a vacuum press for assembly. Next up is a set of dining room chairs.



Community Bulletin Board

If you'd like to let other members know of tools or wood you have for sale, or if you offer any type of service you feel would benefit members, here's the place to post it. Just send King Dahl an email at kingdahl1@gmail.com for inclusion in the monthly newsletter.

FOR SALE: General International model 50-185m1 Tablesaw – \$300

General International model 50-185m1 Tablesaw. Good condition, the blade guard shows wear and tear. This tool has seen moderate use and is ready to go with no issues.



Located in Bellingham.

- Heavy duty precision cast iron ribbed table with T-slots for mitre gauge with two solid cast iron extension wings
- Canadian made rip fence system
- 2HP, 115/230V, 1-Phase motor
- 4 In. dust collection outlet
- wired for 110V
- Left cut
- Blade tilts left
- Caster base included

Contact Tom Bourne at 425-318-9268 (friend of King Dahl's)



Kiln Drying: Jim Baker is offering his newly constructed kiln for the purposes of kiln-drying wood for members. The kiln can hold between 350-400 board feet at one time.

- To Dry Wood - .50 cents/bd ft (max 8' 6" L X 2' W)
- To Kill Bugs - .30 cents/bd ft (140° for 4 hours)

Contact Jim at 360-739-6390
His shop is on Lakeway Drive in B'ham

Meeting Minutes

Minutes of the Board of Directors Meeting held at the Bob's Burger

January 19, 2023

John is hoping to have a few Board meetings in person this year, rather than all virtual.

Committees

Programs Committee:

Chair position is vacant. Jim Ferguson resigned last month. He had been on his own since the start of COVID, so there is no one who is able to quickly step into the role or who knows his process. We need a new chair and a few people on the committee to share the work. It's too much for just one person.

- • Two options for a new chair: Asking flat out for a person to chair this committee (implies a lot of commitment) or asking people to "help out" on this committee and hoping a leader naturally emerges (maybe a former chair can offer guidance and then let them go)
- • Jerry will look through roster and see if anyone jumps out as a possible member of the Programs Committee that we can reach out to
- • Programs Committee Chair/Members should understand and share with presenters that the purpose of the program is to impart knowledge/skills, not give their life story. However, biographies are of interest to many members and should be provided to King before the presentation (preferably at least a week before the meeting) to include in the newsletter.
Presenters/Topics for Future Meetings
- • There are 10 meetings per year for which we need a presenter
 - ○ Zoom meetings might be good for winter months when the weather is unpredictable and it's dark early, but this winter is essentially over, so that can be something we consider for next winter
 - ○ Zoom is also beneficial because we can have presenters from anywhere
- • 42.9% of members joined in the last five years (25.6 just since 2020) so we can recycle presentations that members have done in the past
- • Many new members seem fairly new to woodworking, so we should consider catering some presentations to beginners, and some should be catered to the experts
- • Charlie Drake is lined up for February and can tailor his topic - choosing the right bandsaw blade - to whatever amount of time we have available after the business meeting. There is also the option of having no program in February (see below) and saving Charlie's presentation for when we have an opening to fill last minute.

-
- ○ Advisable to have a list of member presenters/topics who can fill in at the last minute if a presenter has to cancel. "Canned Programs." Andrew offered to reach out to a few members about doing this.
 - ○ Members will be asked for suggestions about who they would like to see present or topics they would like presented about at the February meeting
 - Greg emailed Greg Klassen about presenting in March but hasn't heard back. George and Jerry know him and offered to follow up with him.
 - Looks like Brian Griffin may be presenting in March now.
 - ● Pre-COVID, some meetings were field trips to local businesses like FastCap, Lynden Door, Windsor Plywood. Pacific Rim Tonewoods offered to give us a tour. Could do Edensaw but that would have to be during the day and would be a lot longer than a normal meeting.
 - ● No matter what, we should have a back-up plan of member presenters/topics that we don't use until we need them
 - ● Other people to reach out to: YouTube woodworkers (Wood Whisper), Brian Griffin in Bellingham (Chuck reached out to him on Friday and it looks like he may be presenting in March), Jesse (Tom's apprentice), Stewart Wurtz

Education Committee:

- ● In the past, the club was developing a curriculum/boot camp for beginners. Jim Bucknell and Al Ashley taught this in the past. A small group of people over the course of a few weekends. Could consider reviving this.
- ● A few members are interested in teaching classes in the Spring, committee is working with them.
- ● During the Beads of Courage challenge, beginners could sign up for a mentor to help them.
- ● One of Jerry's box making students is completely new to woodworking, so Jerry gave him a one-on-one orientation and then did the first day of the class with him solo right after the orientation.
- ● Jerry is working on meeting the new members who joined since COVID. He can ask them what they're interested in learning and possibly establish a mentorship program of sorts if there is interest.

- • Richard has a database that he uses to collect information about members and for the library. He could use it to track skill levels, interests, etc, and flag people who are interested in becoming mentors/being mentored. Could also ask new members if they'd be interested in helping on a committee/which committee, or volunteering at shows/setting up meetings, etc.
- Chuck mentioned that tying dues amount to committee membership might encourage more people to join a committee.
- Tried "special interest groups" like furniture/box makers/instrument makers in the past but they didn't go anywhere

Shop Tours:

May need a new tour organizer, as Jim Redding is probably moving to South Carolina. Tours have been on hold during COVID.

- • Jim's feelings:
 - ◦ Con: It's been difficult to find people willing to share their shops, usually the same 4-5 people, and the same core group of people who go, parking is often a challenge
 - ◦ Pro: Those who go seem to enjoy them, they're not technically difficult to pull off
 - ◦ Not sure if we should keep the shop tours as they are or change them
- • Nick's last-minute virtual shop tour was well-received but it wasn't as easy for Nick and viewers to interact
- • As the tours are now, most people can't get to all the shops in the 2-hr time slot
- • Jerry always enjoyed the tradition of having a determined final shop that is larger/has more parking where people would gather for lunch
- • Two new members have expressed interest in showing their shops
- • Suggestions:
 - ◦ Limit to two or three shops
 - ◦ Have them be a social event for new members who RSVP, and then film them to share with the rest of the club

- ○ Shop Open House - the shops would be open for a longer period of time. People would feel less rushed and could go to every shop they're interested in. Would allow for more interaction with the host.
- ○ Model them after the Anacortes or Bellingham art tours - similar to how it is done now except over a longer period of time, like 10am-4pm
- ○ Share a description about what the shop owners do/their specialties, so people can better select which shops interest them
- ○ Renting a bus would eliminate the need for lots of parking (apparently did this before for field trips but it was hard to get enough participation)
- ○ Have just 2 shops, both with parking and large enough for people to have lunch. people who live in A,B,C will go to one shop first, and people who live in X,Y,Z will go to the other, and then they switch. Lunch provided at the second shop.

General Committee Membership

- ● Some committees have four members, some have just one person (not sustainable!)
- ● Each committee should have a chair and at least one other person helping them. No one should be alone/the only person who knows what is going on in a committee. They should meet in person a few times a year.
- ● Can approach new members and tell them that serving on a committee is a great way to learn more about the club.

○ Bring back the red dots for new members? Then we know who to approach about getting more involved. AI has the red dots.

- ● Flat-out ask for help during a business meeting
- ● Ask people for help with a specific, time-limited activity that's not too much work, then maybe talk them into another thing, and then suck them in!

February Business Meeting

Draft Agenda:

- ● John will introduce himself, his goals for the year, and reiterate the club purpose
- ● Bring and Brag

- • 15-minute break
 - • Introduce the Board and have committee chairs talk for a few minutes about their committees (X committee does It has # members, I really need help/if you're interested in helping out/I'm all set for members but could use help with this specific task)
 - • Open the floor to questions to the committee members
- Suggestion to have the 15-minute break after this so club members who are

interested can immediately talk to the committee chairs • Program, if time: Charlie Drake on selecting bandsaw blades

- ○ Could save this to be one of our Canned Programs or have him do a full presentation, rather than this condensed one, later in the year
- ○ That said, the program is a draw for many members

Future of Business Meetings

Currently investigating three meeting platforms:

- • In-person
- • Zoom
- • Hybrid when presenter is in-person and some members are unable to attend
 - ○ Club hired Michael Connelly in late November to get the equipment working and provide written instructions for future reference; there was an issue with the cables but that appears to be fixed
 - ○ King and George went through the soundboard. There hasn't been a chance for them to use it but we know it's possible. We will test it out next time there is an in-person meeting at the school (March?)
 - ○ Suggestion: Hire a nerdy high school student to operate the equipment for a small fee
 - ○ We can continue to hire Michael Connelly at \$90/hour if needed

Name Tags

Jim is unable to continue doing name tags; there is a backlog of about 16 name tags. Greg has a laser engraver and so graciously offered his services. He would need the logo in the proper format.

Raffle Items

- • Question: Should we use club funds to purchase raffle items? They were a draw in the past

- Jerry has a raffle prize for next meeting (returned by a member who won it in the past but has no need for it)
- Richard has a bag of 4 or 5 items from another member specifically for raffles

• Klingspor is a preferred vendor and has offered either a 20-pound bag of random sandpaper bits or a \$20 gift card. Unanimous vote for the sandpaper.

- They may donate every six months, we just have to remember to ask them
- We used to have a vendor liaison

Newsletter

King requests information, the more the better, a reasonable time before the next meeting (at least a week is ideal):

- Raffle items
- Presenter biography
- An ask for presenter/topic suggestions
- Shop tour or shows info if applicable

Minutes of the NCWA General Meeting held via Zoom

January 3, 2023

Call to order: 6:02

Presentation

Tom Howorth -- Dr. Strangemeter or: How I learned to stop worrying (about fractions) and start loving the Metric System

- Introduced by George Knutson, who has known Tom for 15 years when Tom was new to woodworking. Started with scroll saw, now does a lot of CNC and 3D printing.
- Now lives outside Grand Rapids Michigan. Still a member of NCWA and is a member of his new local club, which isn't as awesome as NCWA.
- Why don't we use metric? Money - the cost of converting signs and documentation would be prohibitive.
- Only 3 countries that don't use metric: Liberia, Myanmar, and US
 - English system changed to Imperial system and is now officially known as US Customary Units, though Imperial is more commonly used

- Measurements are kind of confusing because they're based on measurements taken from a human body
 - Cubit used to be the tip of your middle finger to your elbow
 - Span is thumb to pinky
 - Horses are still measured in hands
 - Foot is from the actual foot
 - Yard is taken from a standard stride
 - Inch is a width of a thumb, and there are 12 thumbs in a foot
- Someone chose to use factors of two when measuring inches ($\frac{1}{2}$, $\frac{1}{4}$, $\frac{1}{8}$, etc), though machinists use thousandths of an inch
- Body parts are different between people and can change over the time even in the same person, so why not use something that doesn't change, like the earth?
- Metric System
 - So they decided to take 1/10,000,000th of the distance from the pole to the equator and call that a meter
 - Created a metal bar kept at a specific temp, pressure and humidity and that was the standard. Since the bar could change, decided to use frequency of an atom, specifically the Krypton 86 wavelengths, and then changed that to the speed of light - how fast light can move in vacuum - which cannot change
 - Meters are factored by 10
 - Deca (10 meters), hecta, kilo, mega, giga
 - Deci, centi, milli, micro (10,000th of a meter)
 - Woodworkers really only have to worry about millimeters and centimeters
- Neither system is better than the other. The main difference between metric and imperial: Imperial, you have to use fractional inches. Metric makes the math easier.
 - Half of $1\frac{5}{8}$ = $13/16$. Not hard but can be confusing and leaves room for errors
 - Stanley makes a measuring tape that shows where the middle is: <https://www.stanleytools.com/product/stht30758l/25-ft-center-read-leverlockr-tape-measure>
 - Half of 41mm = 20.5mm
 - Metric centering ruler: <https://www.amazon.com/Incra-Precision-Metric-Centering-Stainless/dp/B00IBN8O7O>
- An issue with metric is using big numbers. An 8-foot board is 244cm. Some people don't like that.

- It can be hard to visualize the metric numbers when we grew up using imperial system -- we can say something looks to be 8 inches long, but for centimeters, we'd have to measure it until we get more comfortable just eyeballing it
 - If you have a woodworking plan in imperial, don't convert to metric; you won't have whole numbers and it will be frustrating. But you can buy plans in metric or design in metric to begin with.
 - Buying metric rulers will help you visualize the sizes
 - 1mm = just a little over 1/32 of an inch
 - 6 inches is approx 150mm, 1 foot is approx 30cm
 - Standard popsicle stick is 1cm wide and 10cm long
 - A meter is a little more than 39 inches
 - 18mm is just under ¾ inch; **25.4mm is 1 inch** (remember this so you can easily convert)
 - Some tools come in both measuring systems, but older tools are usually only in imperial. Can buy calipers and Wixey gauges (<http://www.wixey.com/>) that are switchable between imperial and metric.
- What triggered Tom to move to metric? When he was assembling his 3D printer, everything was in metric. So he 3D printed a metric bolt gauge so he knew exactly which bolt to use in the assembly. A lot of the designs he downloads for 3D printing are in millimeters. He could design in both systems, but metric just made it a lot easier. A lot of Kumiko plans that he wants to do are in metric. He has not fully switched over. He still uses imperial plans to build furniture.

Committee Reports

Treasurer's Report (Al Ashley)

- 71% of 2022 members have renewed membership, 160 people. 65 remaining.
- Cutoff is the next meeting. Anyone who has not paid their dues will be dropped from the roster.
- If you aren't sure if you already paid, reach out to Al, and he can check for you.
- Dues can be paid via PayPal (<https://www.ncwawood.org/>) or by sending a check to the treasurer.
- Membership cards will be mailed out soon.

Membership Committee (Jerry Couchman): Three new people joining in the meeting today:

- Earl Kestler, Bellingham (moved 2 years ago from Reno), retired pilot, fairly new woodworker, bakes bread for a food bank

- David Hardin, Burlington, joined in November but this is his first meeting
- George Keilman, Lake Whatcom, engineer, ran an ultrasound company in Bothell, has an electronics shop and built a woodworking shop that's built into a hillside, has done a lot of outdoor woodworking but wants to do more fine woodworking, uses CAD programs

Library Committee (Bill Pierce/Richard Gillingham):

- No library report because this is a Zoom meeting

Education Committee (Andrew Pellar):

- In the process of rebuilding after the COVID hiatus
- Setting up classes for February and signup will be at the next meeting
- Considering offering online classes as well
- Look for an email in the next few days or weeks

Toys-for-Tots Committee (John Braun):

- Nothing new to report. This is the season of rest.

Programs and Shop Tours Committee - see below Vacant Board Positions

Old Business

Koa wood sale

- Jan 21 from 10am-noon, Mount Vernon Christian School
- 70-80 pieces will be available, all 6/4 stock, most 4-5 feet long, various widths
- Donated to our club by Pacific Rim Tonewoods in Concrete (<https://pacificrimtonewoods.com/>)
- Cash or check, proceeds will go to NCWA
- An email will be sent out with details

Neighborhood Library Kiosk Doors (Greg Koenker)

- Mount Vernon Public Library Director is looking for someone to build little doors for neighborhood little libraries (the ones that are posted in peoples' yards or in parks, not the actual library).
- There are 5 of these little libraries in Mount Vernon that are overseen by the Library Board, but recently they've had vandals pulling off the doors. Library is looking for 6-10 replacement doors for the little libraries.
- Library will pay for time and materials.

- An email will be coming with details and the plans that were used to build the little libraries.

Bring and Brag

- Jim Bucknell:
 - Side table for his TV room. Designed it himself with a floating top and tapered legs, pyramid on the top of each leg. Most is alder, top is highly figured koa veneer.
 - Small box made for his granddaughter. Sapele with a curved top built on vacuum press with a mold. Top and inside bottom is a maple burl veneer.
- Mark Krause:
 - Self-designed sideboard to match a dining room table that he made a year ago. More than 50 hand-cut dovetails. Bookmatched figured koa veneer in the panels. Three drawer fronts are cut from one board so grain pattern is continuous. Sides of drawers are hard maple. Top is a walnut slab (Goby Walnut Products in Portland).

Vacant Board Positions

- Programs Committee: Past chair abruptly resigned, and we need to fill this position ASAP. Interested or know someone who might be a good fit? Reach out to John Ellis. sunndaydulcimers@gmail.com or 425-426-4530
- Shop Tours: Jim Redding is moving, so we'll be discussing how best to proceed with/ change the format of this program.
- Reviving raffles: Not a Board Position but would need someone to help if we bring that back. Are people interested in doing that again?
 - Preferred vendors sometimes donated things, has also been done as a 50/50. Funds benefitted the club
 - Those who spoke up said they were fun, and they enjoyed doing them.
 - Someone would need to sell the tickets the meetings
 - Someone would need to acquire items to raffle, or choose to do 50/50

Other business?

- Will in-person meetings also be Zoom?
 - Possibly. Some meetings may be live only, some only by Zoom, and if we can figure it out, a hybrid meeting that combines both. Still figuring out the technology but there are a lot of technical hiccups. Haven't given up on it though!
- John would also like to have more informal outings, perhaps a quarterly meetup, for those who want to socialize more. We will discuss this more in the future.

February Meeting

- First Tuesday, Feb. 7, at 7pm. Will be in-person at the Burlington Library. Adjourn: 8:0

Preferred Vendors offering DISCOUNTS to NCWA Members:

NORTH –

Hardware Sales

Bellingham Millwork

Hardwoods to Get

Windsor Plywood

Village Books

WEST –

Sebo's Hardware

SOUTH –

Martin Lumber/True Value

Stormo Hardwoods

CENTRAL –

Ekrem Hardware

Karl's Paints

Mt. Vernon Building Center

Cedar Country Lumber

Sherwin-Williams Paint

EAST –

E & E Lumber

SPECIALTY –

Edensaw Woods

FASTCAP

Klingspor

NCWA is open to all interested woodworkers, and was formed to promote high standards in woodworking, woodworking education and showcasing local woodworking. Meetings are generally held on the first Tuesday of each month at 7:00 pm. Dues are \$35 per year, payable to NCWA, 26220 48th Ave NE, Arlington, WA 98223. Submit newsletter articles by email to kingdahl1@gmail.com.

NCWA 2023 Board of Directors:

President – John Ellis

Immediate Past President – Greg Koenker

Vice President – Nick Pederson

Treasurer – Al Ashley

Secretary – Christi Brua Weaver

Members at Large – Peter Gantt, Chuck Barnett, Craig Edwards, Tony Etienne

Committee Chairs:

Programs Committee – TBA

Library – Bill Pierce

Education – Andrew Pellar

Membership – Jerry Couchman

Shows – King Dahl

Shop Tours – TBA

Toys for Tots – John Braun

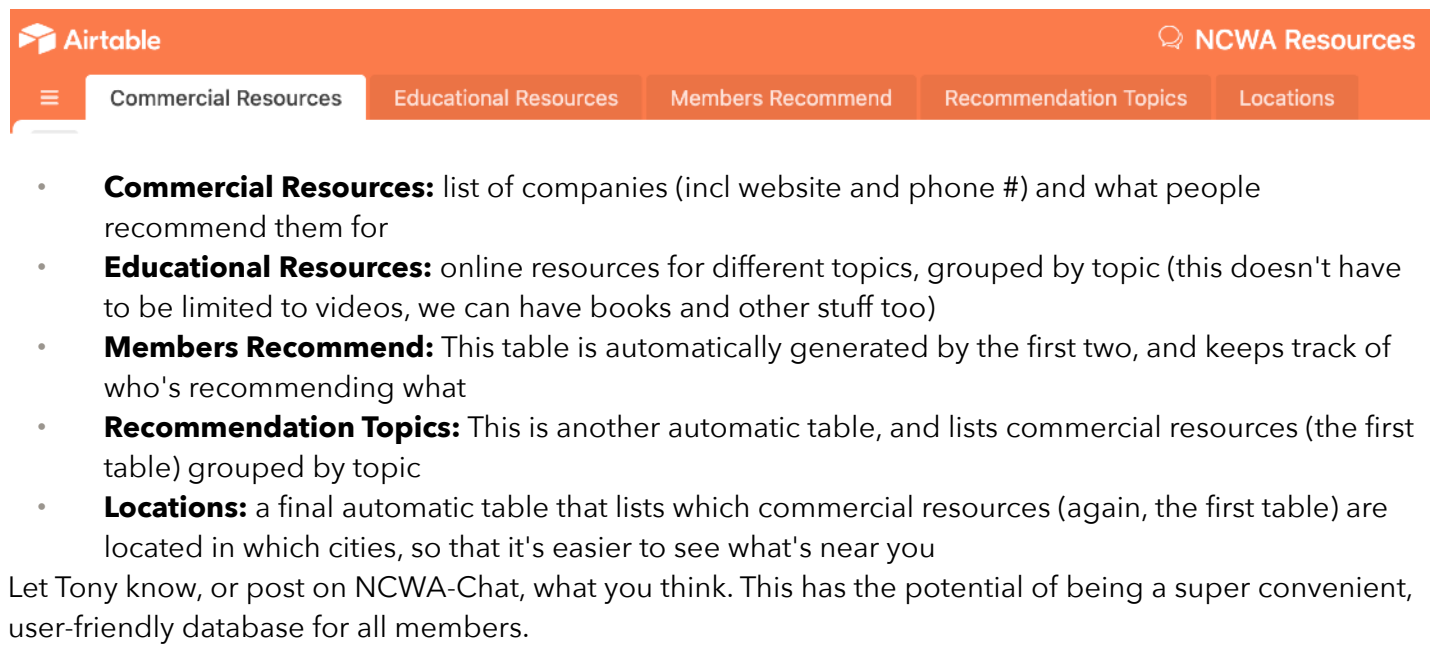
Webmaster – Michael Titus

Newsletter – King Dahl

NCWA Resources

Click this link – [NCWA Resources](#) – for our user-friendly database serving the purpose of storing information about recommendations from NCWA members.

There are 5 tables (1 tab for each) across the top, you can click each one to see its contents. This page is evolving and being updated in real time, so there will be new additions frequently.



- **Commercial Resources:** list of companies (incl website and phone #) and what people recommend them for
- **Educational Resources:** online resources for different topics, grouped by topic (this doesn't have to be limited to videos, we can have books and other stuff too)
- **Members Recommend:** This table is automatically generated by the first two, and keeps track of who's recommending what
- **Recommendation Topics:** This is another automatic table, and lists commercial resources (the first table) grouped by topic
- **Locations:** a final automatic table that lists which commercial resources (again, the first table) are located in which cities, so that it's easier to see what's near you

Let Tony know, or post on NCWA-Chat, what you think. This has the potential of being a super convenient, user-friendly database for all members.