

NORTHWEST CORNER WOODWORKERS ASSOCIATION

April 2011

Next Meeting: April 5th 7:00 PM General Meeting Mt. Vernon Building Center

From I 5 go east on College Way about .6 miles to Continental Place. Turn south and go one block (to the end) and turn right onto Roosevelt. Go about 300 yards and you are there. Mount Vernon Building Center is not your basic lumber yard. They have incorporated a variety of features in their business model specifically for fine woodworkers.

Phone: 360-770-7203 or 360-387-4174



Dale Ragan Promises Karl's Paints is "With Us to the Finish"

There was a time not too many years ago when woodworkers would never use a water-based finish on their projects. But coatings change and today's wood finishers have more choices, and better chemistry is leading us into the realm of safer, water-based coatings. Water-based urethanes are leading the way. When you open a can of gel Polycote it appears as a white stain but dries clear.

Dale Ragan, owner of Karl's Paints in Mount Vernon, opened our minds to new technologies in the development of paints and coatings at our March meeting. Sanding down raised wood grain from the use of water-based products was the old bugaboo that deterred most of us. Dale assured us that some of today's water-based products need only a few

swipes to knock down grain fibers. Also, with low VOC's these paints and coatings are safer to work with. "And you don't have to be a painter to get



Dale Ragan Entertaining the Troops

professional results," he said. Dale's knowledge and good humor kept 70

woodworkers on their feet, literally. With little seating available, it was SRO all evening.

One of the questions we always wanted to ask is “Why is the store named Karl’s?” That was finally answered. The original Mount Vernon store was opened and operated at another city location in 1951 by a man named Karl and was acquired by Dale in 1991. It was a name firmly planted in the public’s mind; Dale kept it. The store also sells picture frames and framing and has a large supply of artist aids.

One coating that enthuses Dale is “Jel’d Stain,” sold in a flat round can with a look like shoe polish. It doesn’t require a Benite platform like other stains. It’s available in many colors, dries in two hours without drips, runs, spills, and mess, and will not raise the wood grain. “It’s simple to use,” Dale said. “Just apply with a cloth, rub it in, wait a few minutes, and then wipe it off with a clean rag. If the color isn’t strong enough, do it again.”

Painting or coating with an air gun brought out some tips for using high volume, low pressure (HVLP) equipment. Before HVLP Dale had sprayed his kitchen cabinets and got more paint on his shoes than on the wood. He showed us guns of various qualities and noted the wide spread in pricing. “You get what you pay for,” he added. Rather than buying expensive equipment, Dale suggested that we try to work with low-cost tools first, like the \$15 gravity gun he offers. Train with it, he urged, it’s good for details and smaller objects at reduced pressure. In either case he said we would need a viscosity cup, a cheap plastic affair, to obtain the right consistency of our paint.

It was a big day for Dale. Earlier, the local newspaper had headlined a story that Dale Ragan, a member of the Mount Vernon City Council, had announced he was running for Mayor.

Dale announced that we will continue to get a 10% discount on any items bought in his store without the need to show our NCWA membership cards.

--Jay

Bring n Brag at Karl’s



Log Truck by Bill Baer, donated to Richard Tinney, owner of Washington Alder



Box by Ben Gage



Table by Jerry Couchman, donated to the Interfaith Coalition in Bellingham. Interfaith provides social services, affordable health and dental care and support for homeless and disadvantaged people in Whatcom County.

Saw Stop Competition

I came across a new technology that promises to offer competition to sawstop. If you are interested their website is: <http://whirlwindtool.com>.

- Andrew Pellar

Board Opens Shop Tours March 26

The NCWA Board of Directors met on March 9th at the Farmhouse Restaurant on Route 20, near La Conner. After determining that a quorum existed, President Jerry Couchman opened the monthly session at 7 p.m. Among the many Old Business matters discussed was the subject of Shop Tours.

A visit to a member's shop is a favorite woodworkers' activity. The first NCWA shop tours of the year will occur Saturday, March 26. Starting at 9 a.m. Club members will visit the shops of four individuals in the general vicinity of Bow. Chair Gary Danilson has invited us to tour the workshops of Jim Bucknell, John Berringer, Bill Baer, and Andy Rudy. The tours usually last until one o'clock or so. Danilson will e-mail maps and other info. These are fun trips that allow members to get a glimpse into the shop life of other woodworkers, gain ideas for use in their own shops, and enjoy the companionship that drives NCWA. (Editor's note; The tour brought out about 45 members. Photos in the next newsletter.)

Following approval of the minutes of the previous Board meeting, Couchman invited immediate past president Jim Torrence to speak to the Board about his year at the helm, meanwhile noting that Jim's experience and counsel had made the president's job easier for him. Torrence surprised Board members, presenting each with a beige tee shirt with a colorful NCWA embroidered insignia on the shirt pocket. It was a generous salute to the Board that had served him throughout 2010.

Treasurer Doug Duehning reported a balance of \$5,968 and an increase of several new members for the month. Doug submitted his 2011 Budget to the Board. His report predicts a total income of \$3,640 and annual operating costs of \$4,460. He projected an end-of-year balance of \$2,460.29. The Board approved the Budget as submitted.

Education Chair Jerry Anderson discussed several proposed enhancements to our educational program. He envisions more outside teaching help with an

expanded curricula of woodworking techniques. At the same time NCWA needs to serve the needs of a growing number of beginners who have joined our organization. Board members recognize the importance of a wide-ranging course of woodworking studies for both beginning and intermediate skill levels. Jerry is looking at the availability of both in-house skilled instructors and outside professional teachers. Meanwhile, Andy Pellar and the rest of Jerry's committee are busy with plans for immediate classroom help for our newcomers to woodworking. Ed Pyscher concurred with Jerry's remarks saying, "It's time to take the next step."

Speaking for Program Chair Jim Bucknell, Couchman confirmed that our next two monthly programs would take place at the Mount Vernon Building Center in April and at the Maritime Museum in Anacortes in May. He also passed along plans Bucknell was developing for our Club's exhibition at Cascade Mall in Mount Vernon on Saturday and Sunday, June 18 and 19. Jim will place several tables in the 35' x 35' Center Court area. He would like to exhibit complete projects as well as those in various stages of development. He also would like a project shown in various steps of production from raw material to completion. Jim also anticipates showing jigs and tools used in the sub-assemblies and in the evolution of woodworking projects.

Our new audio-visual system is complete! Charley Drake has been assembling the equipment that will make easier sound amplification at meetings and bring us the newer technology that can project live action onto a screen. He connected up the new camera, projector, and mixer board to show quality images on the wall of the meeting room. A microphone, smaller than a computer mouse, sat on the table in front of Jerry Couchman. A camera tripod has been donated by Pellar.

The Board will soon be out of its emblematic coffee mugs that we present to speakers and meeting hosts. Doug Duehning is getting quantity prices to replenish them and the Board wants to see a sample before ordering.

Rick Anderson has suggested that NCWA bring professional woodworkers back as speakers at our meetings. He cited Jim Tolpin and Tim Lawson as area pros who teach at the Port Townsend School of Woodworking. Tolpin addressed the membership almost two years ago and said that he would like to repeat. Another suggestion was to invite a master woodworker for an all-day seminar that would include demonstrations. Mentioned was Gary Rogowski from Portland's Northwest Woodworking School. The Board will continue to review these ideas.

A new item of business not on the evening's agenda was the subject of liability insurance. The Club pays for "general liability" insurance from Safeco. Doug explained that this low-priced policy does not cover us for "doing woodworking, only talking about it." In other words, a machine-induced injury claim might end with a cancelled policy. President Couchman suggested that we look further into this issue and see if better protection policies are available to woodworking groups. The American Association of Woodturners offers free liability insurance to its members, but woodworking clubs do not have a similar national organization.

We adjourned at 8:30 pm.

Board Members Present: G. Anderson, E. Benson, P. Choquette, J. Couchman, C. Drake, D. Duehning, J. Geisel, A. Pellar, E. Pysher, and M. Titus. Guests: B. Baer and J. Torrence.

WOOD YOU KNOW?

...that there's a wood that can be bent at room temperature around a form in two or three dimensions? **Compowood** is offered in various thicknesses up to and including 8/4 inches in 14 hardwood and exotic species. A 1988 European innovation, the wood is shipped wet (around 20%), wrapped in plastic and can be used immediately in a form that will shape it in almost any direction. When dry, **Compowood** holds its shape and can be worked with regular shop tools.

You can read about it in April's *Popular Woodworking* magazine, or go Online to "Flutedbeams.com" (253-988-2046).



David Selditz

MEET THE NEW MEMBER

David Selditz was our guest speaker in February, and decided to join our association after meeting us. His presentation highlighted his arts and crafts style furniture and was well received. He started woodworking while he was in the 82nd Airborne Division at Fort Bragg, North Carolina. The post had a good woodworking hobby shop, so he took advantage of it. After his Army days, he lived in Portland, Oregon, where he continued woodworking. He has been in the Bellingham area for about five years now, and continues to pursue woodworking as a career. His work has been featured in Northwest Fine Woodworking in Seattle, and Artwood in Bellingham, among other places. He is currently going through the process of becoming a member of Artwood.

Jerry Couchman

Table Saw Regulations?

Increased pressure is being placed on the power tool industry to improve the safety of the table saw. The Chairman of the Consumer Product Safety Commission is asking the power tool industry to address table saw safety, with the threat of federal regulations. It is estimated that there are an average of 10 finger amputations a day from table saw usage.

(*Woodworker West*, March-April 2011.)

Woodworking Tools Recalls

Ryobi is recalling Portable Tablesaws (Model RT520) sold at Home Depot from July thru October 2010. Blade could be misaligned, posing a laceration hazard. www.ryobitools.com or call (800) 597-9624

Stihl is recalling Chain Saws (Model MS 361C) sold February 2004 thru August 2009. The throttle trigger may stick after it has been released, causing the engine to continue to run, and pose a risk of laceration injury. Return the tool to an authorized Stihl dealer for free repair. For info, call (800)610-6677.

DeVilbiss Air Power Company is recalling air compressors sold under the brand names of Craftsman, Delta Shopmaster, DeVilbiss, Husky, and Porter-Cable.

Submitted by Jay Geisel

WOOD WORKING RIDDLE

What is 10 feet long, curves in two directions, has 6 sides and 4 different angles?

This riddle began with – “Do you have a table saw?” Then I was shown the what - a 10 foot long, tapered, twisted, crooked and bowed piece of white oak. They liked the crook and the bow. This would not be a table saw project.

The bottom side was relatively smooth, apparently having been shoved through a table saw as circular scorch marks attested to. For me, a planer was the first step to remove the taper and bring it parallel. I removed the in/out feed tables on my portable planer to shorten the bed in order to retain the natural curves.

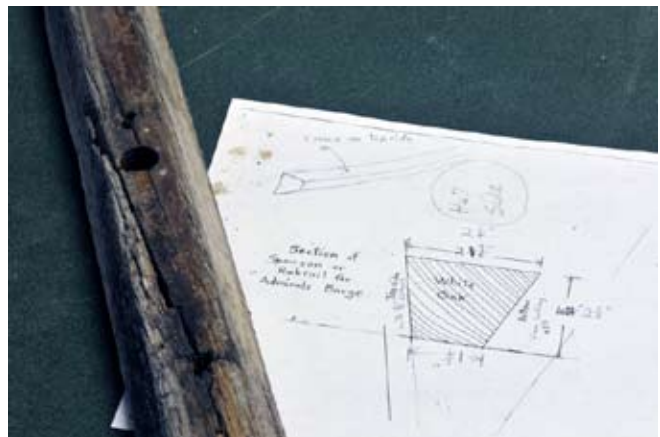
Next, to set the crown, I made a half template out of plywood. With a batten set at the high and low points and pushed out in the middle to obtain a gentle curve, I followed the batten with a router and a top bearing bit. Attaching the template to the piece, I used the router and top bearing bit. The top bearing bit was

not long enough to trim the thick work piece and created a ledge. I removed the ledge on the router table with a bottom bearing bit which reached high enough to ride on the smooth section. Then back to the planer to bring the other side parallel.

Finally, two different bevels needed to be cut. I made two simple jigs out of scrap to position the work at the proper angles and guide the piece through the planer.

The answer to this riddle – a rub rail to fit a curved boat hull.

Andrew Pellar



A Need and a Plan



Guide and Finished Piece

MORE ON HARTVILLE TOOLS DISCOUNTS:

Here's the finale word. Yes, we do get a 15% discount. However, remember this, please and thank you, if you order an item that is on sale, you will get the lower of either the sale price or the discounted price. No, you will not get a discount on the sale price.

Here's another thing to remember. The Hartville system keys on the email address. I notify Hartville of new members, and of any changes phone numbers, mailing address, email, etc. If you change your email address, and don't let me or Doug Duehning, our Treasurer who is the keeper-of-the-official-NCWA-member-roster know you have changed your email address, so I can let Hartville know, then there's a pretty good chance you won't get the discount.

Ed Pysher

MEET THE NEW MEMBERS



Meet Jim Bradbury. Jim and his young family recently moved into a 1950s style farmhouse in Burlington and he is in the process of upgrading some of the features. Jim is a homebuilder and remodeler. He has a shop to die for! It is a farm building that is as big as a gymnasium and he is organizing it to build cabinets for his customers



Meet Rob Sager. Rob lives on Samish Island in a home that he built for his family. Rob is in the stone and tile business, and would like to expand his skills to include fine woodworking.



Meet Paul Anderson. Paul is a highly accomplished turner and has also built some really nice furniture for his home. His specialty seems to be maple and cherry tables, and they are beautiful. His wife Judy has also built some furniture.



Jesse Charette

Make, Sharpen and Use a Plane

March was a great month for hand tool use. You could make your own plane in Val's class, then sharpen and use planes and scrapers with Charley Drake. Shavings R Us!



Meet Ron Bailey. Ron lives near Marysville, and has done some nice work remodeling his home. He is now ready to get started with fine woodworking and has accumulated a few tools. Like most of us “newbies”, Ron is in the process of organizing his shop and deciding on the kinds of projects he would like to do.

Write ups and photos by Ed Pysher



Sharpening Class with Charley Drake

Education Committee Report

Three of the April classes will focus on building a cabinet:

Making a Cabinet Carcase – April 2 at Bill Baer’s shop in Bow; room for two more

Making Drawers – April 9 at Chuck Robertson’s shop on Camano Isl.; Class is full

Making Cabinet Doors – April 16th at Bill Baer’s shop; room for two more

Two more April classes are:

Sculpturing & Shaping – taught by R.P. Myers at Val Matthew’s shop in Bow. Room for 4 more.

Wood Carving – Scheduled for April 30th, location & instructor to be announced. Room for 3 or 4 more students.

Sign up at the April meeting or contact Jerry Anderson at 360-770-8559 or GCONSULTING@WAVECABLE.COM to reserve a spot in any of the classes with vacancies.

Classes for beginning woodworkers are being developed. More to come on this in future newsletters. If any members have ideas or requests for additional or new classes, please let us know. We’re always looking for volunteers to be instructors, or assistants to instructors. It’s a great way to improve your skills and help your fellow members improve theirs!

Jerry Anderson, Chairman

Classifieds

For Sale:

4 speed, 5 HP. 220v. Grizzly professional spindle shaper. 2 wood fence pieces, cast iron miter gage, 4 hold down assemblies, 3 table inserts, super heavy duty mobile base. Used once! Shaper model G 59122, retail \$2350.00 + tax. Mobile base, model G 7315z, retail \$89.95 + tax. Total value \$2440.00. Sell for \$1200.00

Contact Phil Choquette, Raintree Woodworks. 360-675-8320.

All Members are Welcome

If you would like to attend the board meetings please feel free to do so. The Farmhouse has good food, and the board discussions can be entertaining. We meet the 2nd Wednesday of the month, at 7:00 P.M.

Charley Drake

DISCOUNTS AVAILABLE FROM THESE VENDORS.



Erik Coburn
 211 SETON ROAD
 PORT TOWNSEND, WA 98368
 Direct (360) 844-0209
 Phone (360) 385-7878
 FAX (360) 385-5215
 Toll Free (800) 745-3336
 E-Mail: erik@edensaw.com
 www.edensaw.com
 SmartWood: SW-COC-51

WOODCRAFT®


Woodcraft Supply Corp.
 5963 Corson Avenue S. • Seattle, WA 98108



Phone: 206/767/6394
 Fax: 206/767/8034
 www.woodcraft.com

Helping You Make Wood Work™

FRONTIER BUILDING SUPPLY • ESTABLISHED 1975




JOHN VANDERWAL
 MANAGER

PH (360) 675-7790
 CELL (360) 661-6289
 FAX (360) 679-2563
 john.vanderwal@fbs.us

33860 SR 20
 Oak Harbor, WA 98277
 www.fbs.us

SPECIALISTS = LUMBER • PAINT • CABINETS • MILLWORKS

FRONTIER BUILDING SUPPLY • ESTABLISHED 1975




JIM MELZARK
 Manager

PH (360) 856-6530
 FAX (360) 856-5310
 CELL (360) 661-6309
 jim.melzark@fbs.us

708 W. St. Rte. 20
 Sedro Woolley, WA 98284
 www.fbs.us

SPECIALISTS = LUMBER • PAINT • CABINETS • MILLWORKS

FRONTIER BUILDING SUPPLY • ESTABLISHED 1975



TERRY JOHNSON

PH (360) 293-4588
 Cell (360) 661-6286
 FAX (360) 293-5128
 terry@fbs.us

1911 Commercial Ave.
 Anacortes, WA 98221
 www.fbs.us


SPECIALISTS = LUMBER • PAINT • CABINETS • MILLWORKS

ROCKLER

WOODWORKING AND HARDWARE



(206) 634-3222
 Fax: (206) 633-3616
 E-mail store2@rockler.com
 3823 Stone Way North Seattle, WA 98103
 www.rockler.com



KEN ASP

(360) 676-1025
 FAX (360) 676-4357
 CELL (360) 220-1497
 kasp@windsorplywood.com

1208 IOWA ST.
 BELLINGHAM, WA 98229



Hartville Tool

WOODWORKING

Master Catalog
 2007-2008

Phone: (800) 345-2396
 Fax: (330) 877-4682
 www.hartvilletool.com

Announced sale or marked-down items will not be further discounted; some manufacturers may restrict dealer discounts of their products.

NCWA MEMBERS

You qualify for discounts of 10% or more. Show your current year Membership Card when you make a purchase from these dealers.

MARTIN 
LUMBER & HARDWARE, INC.

TODD NELSON

2730 BROADWAY
EVERETT, WA 98201

DIRECT (425) 259-5114
TEL (425) 259-3134
FAX (425) 252-5371



Kevin Kok
Vice President

Mount Vernon Building Center
a division of Pacific Lumber Products, Inc.

Phone: (360) 424-9073
Fax: (360) 424-5048
E-mail: mvbc@mvbc-online.com



815 Roosevelt Avenue • Mount Vernon, Washington 98273

FINE WOOD MERCHANTS



EST. 1980

Mike Woods
President
mwoods@soundcedar.com

2600 Cedardale Road
Mount Vernon, WA
98274

360.424.4548
360.424.7978 FAX
(800) 468.6081
soundcedar.com



RLS, Inc.
1102 Commercial Ave.
Anacortes, WA 98221
sebos@mydoitbest.com
www.sebos.com

**SEBO'S HARDWARE &
EQUIPMENT RENTAL**

Dave Sem

Phone: (360) 293-4575
1-800-204-3737

Mon. - Fri. 7:00 A.M. - 6:00 P.M. • Sat. 7:30 A.M. - 5:30 P.M.



Hardware Sales, Inc.
"SERVICE IS OUR SPECIALTY"

Jerry McClellan
President
jerry@mhardware.com

Exit 254 - 2 Blks W.
2034 James St.
Bellingham, Washington 98225

Phone: (360) 734-6140
Fax: (360) 734-0069

Visit our website at www.hardware.com



733-5630 Phone
676-6633 Fax
1413 R.R. Avenue
Bellingham, WA 98225

Dupont Auto Finishes
Benjamin Moore &
Pittsburgh Paints
Pratt & Lambert

 **Karl's**
Paints & Art Supplies

Dale Ragan

1515 Freeway Drive
Mount Vernon, WA 98273
360-336-2855 Fax 360-336-5207

Art Supplies • Wallpaper • Custom Framing


**Benjamin
Moore**
Paints
SINCE
1951



Hardwoods to Get
Targo Woods

1104 C Street, Bldg. B
Bellingham, WA 98225
go2targo@comcast.net

Oby V. Johnson
cell 425-501-5268
store 360-738-9140

COMING EVENTS

April 2nd	????	Cabinet Making	Bill Baer's Shop
April 5th	7:00 PM	Membership Meeting	Mt. Vernon Building Center
April 9th	???? AM	Drawer Construction	Chuck Robertson's Shop
April 13th	7:00 PM	Board Meeting	Farmhouse Inn
April 16th	???? AM	Door Construction	Bill Baer's Shop
April 30th	???? AM	Carving	?????????

The NCWA is open to all interested woodworkers, and was formed to promote high standards in woodworking, woodworking education and showcasing local woodworking. Meetings are held on the first Tuesday of each month at 7:00 PM. Location is announced in the newsletter. Dues are \$30 per year, payable to NCWA, 150 Swinomish Dr., Laconner, WA 98257. Newsletter submissions are welcomed and are due by the 3rd Saturday of the month. Submit to NCWA Newsletter, 5955 Central Ave., Anacortes, WA 98221, or email to cndrake@wavecable.com or call 360-588-8448.

2011 Officers and Chairpersons

President:	Jerry Couchman	(360) 366-5169	Education	Gerald Anderson	(360) 766-6248
Vice President	John Bellinger	(360) 708-4036	Librarian	Gary Danilson	(360) 424-9268
Secretary	Jay Geisel	(360) 466-3908	Newsletter	Charley Drake	(360) 588-8448
Treasurer	Doug Duehning	(360) 466-1281	Membership	Ed Pysher	(360) 766-0136
Board at Large	Andrew Pellar	(504) 339-0871	Shows	Phil Choquette	(360) 675-8320
Board at Large	Mike Titus	(360) 714-8182	Toys for Tots	Gene Benson	(360) 466-3004
Programs	Jim Bucknell	(360) 766-5088	Webmeister	Mike New	(360) 707-2314
Activities	Gary Weyers	(360) 380-0888			

**NCWA NEWSLETTER**

5955 Central Ave.
Anacortes, WA 98221